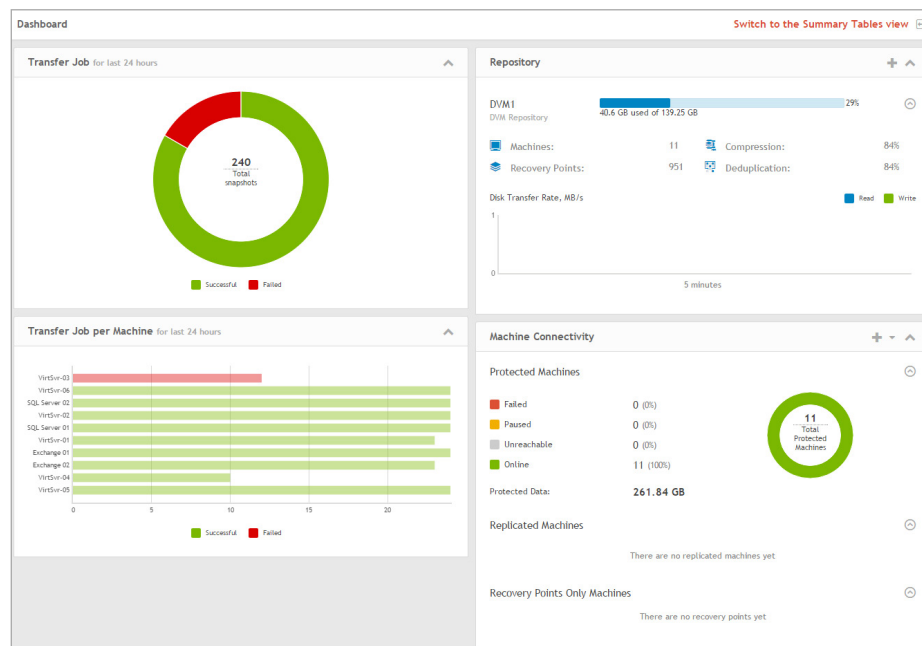


Rapid Recovery

ZeroIMPACT recovery — anything to anywhere

Optimize your users' application experience — and simplify backup and recovery. You need to meet aggressive SLAs for multiple systems and applications — physical, virtual and cloud. When critical business systems fail, you don't have time to cobble together multiple solutions or sort through complex options. You need a single, simple, flexible solution to protect everything, everywhere with zero impact on your users — and to make work easier for you in the process.

Rapid Recovery lets you protect anything, anywhere — systems, apps and data — whether it's physical, virtual or in the cloud. Run without restore fast and easily. Monitor and manage your entire environment across multiple sites from one cloud-based management console. Quest® Rapid Recovery provides you with one reliable, admin-friendly solution that can be deployed as software or in a scalable appliance form factor — with all capabilities included.



The dashboard gives insights into your data protection. It's drag-and-drop customizable, with clickable links to action items.

“Point and click restores? C’mon, man, it doesn’t get any better than that!”

Charles Turcich, System Administrator, Catasys, Inc.

Source: TechValidate

BENEFITS:

- Protect anything, anywhere — systems, apps, data — whether it's physical, virtual or in the cloud.
- Merge backups across multiple sites from one cloud-based console.
- Run without restore, with zero impact on your users.
- Recover in <15 minutes — fast and easy.
- Protect growing virtual environments automatically.
- Reduce storage requirements and costs.

Rapid Recovery provides everything in one simple solution. Avoid having to shop around or pay extra to get the capabilities you need.

Using Rapid Recovery, you can:

- Recover whole systems, your apps and their data — even terabytes of data — in less than 15 minutes.
- Ensure zero impact on your users by presenting them with the data they request instantly, during restores, as if the outage never happened.
- Ensure system, application and data availability everywhere: physical, virtual and cloud.
- Protect growing virtual environments automatically.
- Connect to all the leading public clouds simply and easily.
- Match data protection to your needs, using agent-based and agentless backup — all in one solution.
- Lower costs — all capabilities are included in one solution.
- Manage and configure your data protection in just a few clicks — simplified processes and one friendly, comprehensive management interface.

Rapid Recovery provides everything in one simple solution. Avoid having to shop around or pay extra to get the capabilities you need. Stop juggling multiple solutions and eliminate time spent learning and using multiple interfaces.

FEATURES

- **Cloud Archive** — Archive your static data to Microsoft Azure, Amazon S3 and Glacier, Rackspace, Google or any OpenStack provider. Expand your recovery options by directly mounting archives for simple bare-metal restore and file-level restore.
- **Rapid Snap for Applications** — Use incremental forever snapshots to capture an entire application and its relevant state, up to every five minutes, for complete application and system recovery with near-zero RTOs and aggressive RPOs. Benefit from application-consistent protection for Microsoft Exchange, SQL and Oracle 12c.
- **Rapid Snap for Virtual** — Achieve easy, scalable protection for your growing virtual environment by protecting VMware and Hyper-V VMs without disrupting applications and users. Enjoy agentless protection for Microsoft Exchange and SQL running in a VM.
- **Live Recovery** — Restore operations near-instantly with an RTO of minutes.
- **Verified Recovery** — Perform automated recovery testing and verification of backups to ensure that the file systems, Microsoft Exchange and SQL Server instances you back up will be recovered.
- **Universal Recovery** — Restore at any level, from a single file, message or data object to a complete physical or virtual machine, even to dissimilar hardware.
- **Virtual Standby** — Continually send updates to a virtual machine that can be activated in the event there's an issue with the primary machine.
- **Easy DRaaS in Azure** — New! Create virtual standby machines in your Azure account in just a few clicks for easy and reliable disaster recovery as a service.
- **Replication** — Easy, configurable replication of your backups to one or more target Rapid Recovery Cores anywhere — on premises, remote, or in public or private clouds.
- **Compression and deduplication** — Get up to a 90 percent reduction in required storage capacity compared with the size of the protected data, using integrated inline fixed block deduplication and built-in optimized compression.
- **File Search-and-Restore Wizard** — Search the recovery points of a protected machine, and find and restore individual files to your Rapid Recovery core directly from the search results.
- **Changed-block tracking** — Track changes at the block level, backing up only the data that has changed, to ensure optimal performance.
- **Quest QorePortal™** — Access centralized management, reporting and dashboards for multiple Rapid Recovery cores and sites. Administer your backups from anywhere, anytime, with the Quest hosted management console.
- **FIPS certification** — Meet governmental data security requirements; the Rapid Recovery Crypto Module certification is 140-2 Level 1.
- **All-inclusive software** — Lower your costs with no extra charges for replication, Virtual Standby and all the other advanced capabilities.

CORE AND CENTRAL MANAGEMENT CONSOLE REQUIREMENTS

OPERATING SYSTEM

The Rapid Recovery Core and Central Management Console require one of the following 64-bit Windows operating systems. They do not run on 32-bit Windows systems or any Linux distribution.

Microsoft Windows 8.1*, 10

Microsoft Windows Server 2008 R2 SP1, 2012, 2012 R2*, 2016 (except Core editions)

Note: Windows operating systems require the .NET Framework 4.5.2 to be installed to run the Rapid Recovery Core service.

MEMORY

8GB RAM or more

PROCESSOR

Quad-core or higher

STORAGE

Direct attached storage, storage area network or network attached storage

NETWORK

1 gigabit Ethernet (GbE) minimum

AGENT SOFTWARE REQUIREMENTS

OPERATING SYSTEM

The Rapid Recovery Agent software supports 32-bit and 64-bit Windows and Linux operating systems including the following:

Microsoft Windows 8.1, 10

Microsoft Windows Server 2008 R2 SP1 (all editions except Windows Server 2008 Core)

Microsoft Windows Server 2012, 2012 R2*, 2016

Red Hat Enterprise Linux (RHEL) 6.3, 6.4, 6.5, 6.6, 6.7, 7.0, 7.1, 7.2, 7.3**, 7.4**

CentOS Linux 6.3, 6.4, 6.5, 6.6, 6.7, 7.0, 7.1, 7.2, 7.3, 7.4

Oracle Linux 6.3, 6.4, 6.5, 6.6, 6.7, 7.0, 7.1, 7.2, 7.3, 7.4

Debian Linux 7, 8, 9

Ubuntu Linux 12.04 LTS, 12.10, 13.04, 13.10, 14.04, 14.10, LTS, 15.04, 15.10, 16.04 LTS, 16.10, 17.04***

SUSE Linux Enterprise Server (SLES) 11 (SP2 and later), 12****

Note: Windows operating systems require Microsoft .NET framework version 4.5.2 to run the Rapid Recovery Agent service.

Note: VMware ESXi environments are compatible with some operating systems that Quest does not support. While you can add these VMs to protection, Quest only supports the operating systems in this list. Protect machines with other operating systems at your own risk.

HYPERVERSOR SUPPORT (EXPORT AND VIRTUAL STANDBY)

VMware: Workstation 7.0, 8.0, 9.0, 10, 11, 12

vSphere ESXi 5.5, 6.0, 6.5

Microsoft Hyper-V: Microsoft Windows 8, 8.1, 10, and Microsoft Server 2008 SP2, 2008 R2 SP1, 2012, 2012 R2, 2016

Oracle VirtualBox 5.1 and higher

For a complete list, please refer to the release notes.

ABOUT QUEST

At Quest, our purpose is to solve complex problems with simple solutions. We accomplish this with a philosophy focused on great products, great service and an overall goal of being simple to do business with. Our vision is to deliver technology that eliminates the need to choose between efficiency and effectiveness, which means you and your organization can spend less time on IT administration and more time on business innovation.

* These operating systems require the ASP .NET 4.5x role/feature. When installing or upgrading the Core, the installer checks for these components based on the OS of the Core server and installs or activates them automatically if required.

** Versions 7.3 and later available on the XFS file system only.

*** Versions 12.04 LTS, 12.10, 13.04, 13.10, 14.10, 15.04, 15.10 have reached end of life and are no longer tested; therefore, support is limited.

**** BTRFS is supported on kernels 3.7 and later.