



Documentation

Primary backup target for
performance testing

Summary DPA

Home

[Overview](#)

Host Settings

[Network](#)

[Time](#)

Security

[Remote Access](#)

[Users and Roles](#)

Integration

[Backup Infrastructure](#)

[Updates](#)

Support

[Logs and Services](#)

Overview

Quick Actions

[Change Password](#) [Request root access](#)

Remote Access

Veeam Software Appliance Type: Veeam Infrastructure Server

SSH Server: Disabled

Certificate thumbprints: [Show](#)

Last login: veeamadmin at 6/8/2026 2:20:03 PM

iSCSI and NVMeOF settings

iSCSI Qualified Name: InitiatorName=iqn.1994-05.com.redhat:f1775dce41ee

NVMe Qualified Name: nqn.2014-08.org.nvmexpress:uuid:00000000-0000-0000-0000-905a08294166

Networks

ens4035f1:	IPv4 - Manual: 10.10.10.15 IPv6 - Disabled
ens3907f0:	—
ens3907f1:	—
ens4035f0:	—

Time Settings

NTP Server: 10.10.10.10

Time: 6/9/2026, 03:04 PM GMT-06:00

Adding DPA to Veeam Backup & Replication Server

☰ Veeam Backup & Replication

< Back | **Edit Backup Repository - Target Primary Repository**

- Name
- Server
- Repository
- Mount Server
- Review
- Summary

Repository

Type in path to the folder where backup files should be stored, and set repository load control options.

Location

Path to folder:

Capacity: 27.94 TB

Free space: 27.57 TB Populate

Use fast cloning on XFS volumes (recommended)
Reduces storage consumption and improves synthetic backup performance.

Load control

Running too many concurrent tasks against the repository may reduce overall performance, and cause I/O timeouts. Control storage device saturation with the following settings:

Limit maximum concurrent tasks to:

Limit read and write data rate to: MB/s

Repository settings

Summary

< Back
Edit Backup Repository - Target Primary Repository

- ✓ Name
- ✓ Server
- ✓ Repository
- ✓ Mount Server
- ✓ Review
- **Summary**

Summary

You can copy the configuration information below for future reference.

📄
Copy to Clipboard

General settings

Name:	Target Primary Repository
Windows mount Server:	Not specified
Linux mount Server:	10.10.10.15
Backup folder:	/var/lib/veeam/backup
Write throughput:	unlimited
Max parallel tasks:	4
Fast cloning on XFS volumes:	Enabled

Repositories

DPA is Target Primary Repository

Veeam Backup & Replication
Server time: 6/9/26, 3:36 PM

Running Sessions

Instant Recovery (1)

Home

Overview

Jobs

Backups

Infrastructure

Repositories

Proxies

Managed Servers

Audit

Logs and Events

Analytics

Veeam ONE

Repositories

Backup Repositories Scale-out Repositories Veeam Data Cloud Vault

Filter (None)

+ Add Repository
✎ Edit Repository
🗑 Remove Repository

Name ↑	Type	Status	Host	Path	Capacity	Free	Used Space	Description
Selected: 0 of 2								
<input type="checkbox"/> Default Backup Repository	Hardened	Online	vbr-01	/var/lib/veeam/backup	206.9 GB	119 GB	86.4 GB	Created by Veeam Backup
<input type="checkbox"/> Target Primary Repository	Linux	Online	10.10.10.15	/var/lib/veeam/backup	27.9 TB	27.6 TB	180.9 GB	Created by .veeamadmin at 6/8/2026 2:39 PM.

Backup Jobs to DPA

Jobs

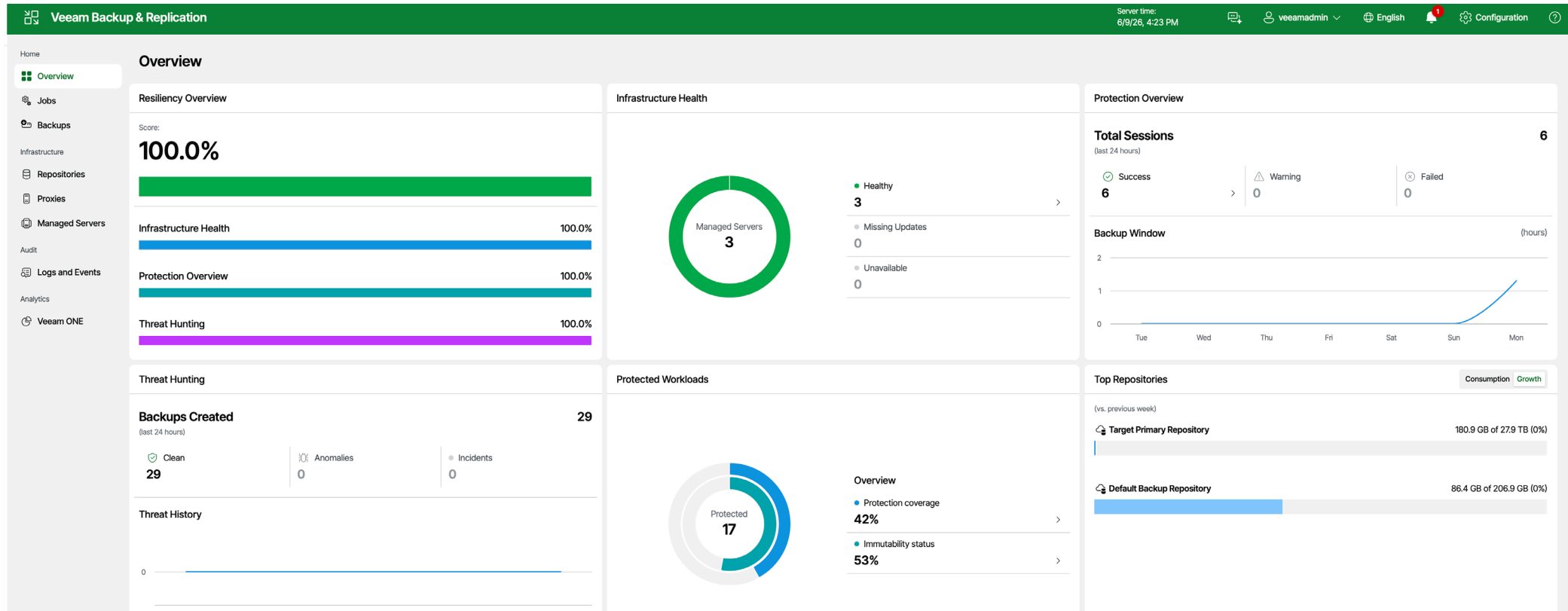
Backup Jobs Backup Copy Jobs

Type in a job name Last Result: All 🟢 🟡 🔴 Filter (None) Last Run Duration

▶ Start Stop ↻ Retry 🎯 Active Full ⏸ Disable + Add ✎ Edit 🛠 Clone 🗑 Delete ⓘ Details

<input type="checkbox"/> Name ↑	Type	Objects	Status	Last Result	Next Run	Target	Description
Selected: 0 of 3							
<input type="checkbox"/> ⚙ Backup DNS	VMware Backup	1	🔴 Stopped	🟢 Success	6/10/2026 1:00 PM	Target Primary Repository	Created by .\veeamadmin at 6/8/2026 2:44 PM.
<input type="checkbox"/> ⚙ Backup Management VMs	VMware Backup	10	🔴 Stopped	🟢 Success	6/9/2026 10:00 PM	Target Primary Repository	Created by .\veeamadmin at 6/8/2026 4:19 PM.
<input type="checkbox"/> ⚙ Backup vCenter 01	VMware Backup	1	🔴 Stopped	🟢 Success	6/9/2026 10:00 PM	Target Primary Repository	Created by .\veeamadmin at 6/8/2026 2:42 PM.

General Overview





Instant Recovery VM from DPA Storage

Veeam Backup & Replication Server time: 6/9/26, 3:41 PM veeamadmin

Running Sessions

Instant Recovery (1)

Home

Type in an object name Filter (None)

Overview

Jobs

Backups

Instant VM Recovery Restore Entire VM Restore Guest Files Delete

Job Name ↓	Creation Time	Type	Malware Status	Location	Restore Points	Repository	Platform
Selected: 1 of 7							
> Backup VMs	6/8/26, 3:02 PM	Orphaned	—	Disk		Target Primary Repository	VMware
> Backup vCenter 01	6/8/26, 2:43 PM	Backup	—	Disk		Target Primary Repository	VMware
> Backup Management VMs	6/8/26, 4:20 PM	Backup	—	Disk		Target Primary Repository	VMware
> Backup Management VMs	6/8/26, 3:55 PM	Orphaned	—	Disk		Default Backup Repository	VMware
∨ Backup DNS	6/8/26, 2:44 PM	Backup	—	Disk		Target Primary Repository	VMware
DNS_NTP01	6/9/26, 2:21 PM	Backup	—	Disk	3	Target Primary Repository	VMware
> Backup All-VMs	6/8/26, 4:00 PM	Orphaned	—	Disk		Default Backup Repository	VMware

Infrastructure

Repositories

Proxies

Managed Servers

Audit

Logs and Events

Analytics

Veeam ONE



Instant Recovery VM

Veeam Backup & Replication Server time: 6/9/26, 3:40 PM veeamadmin

Running Sessions

Instant Recovery (1)

[Migrate to Production](#) [Retry](#) [Stop Publishing](#) [Properties](#)

<input checked="" type="checkbox"/>	Name ↑	Type	Host	Status	Restore Point	Backup Name
Selected: All 1 items						
<input checked="" type="checkbox"/>	new_DNS_NTP02	Instant VM Recovery	labmia01.ais.us	Mounted	6/9/26, 2:30 PM	Backup Management VMs

Home

- Overview
- Jobs
- Backups
- Infrastructure
 - Repositories
 - Proxies
 - Managed Servers
- Audit
 - Logs and Events
- Analytics
 - Veeam ONE

Instant Recovery VM

The screenshot displays the vSphere Client interface for a virtual machine named 'new_DNS_NTPO2'. The interface includes a navigation pane on the left, a main content area with tabs for Summary, Monitor, Configure, Permissions, Datastores, Networks, Snapshots, and Updates, and a bottom task pane.

Virtual Machine Details:

- Power Status:** Powered On
- Guest OS:** Ubuntu Linux (64-bit)
- VMware Tools:** Running, version:12448 (Guest Managed)
- DNS Name (1):** dnsntp01
- IP Addresses:** (None listed)
- Encryption:** Not encrypted

Usage:

- CPU:** 0 MHz used
- Memory:** 2.44 GB used
- Storage:** 24.08 GB used

Recent Tasks:

Task Name	Target	Status	Details	Initiator	Queued For	Start Time	Completion Time
Power On virtual machine	new_DNS_NTPO2	Completed		VSPHERE.LOCAL\Administrator	6 ms	06/09/2026, 5:33:34 PM	06/09/2026, 5:33:34 PM

Instant Recovery VM

Instant VM Recovery
✕

Job progress: 0%

Duration: 00:09:25

Status: **Running**

Message	Duration
✓ Starting new_DNS_NTP02 recovery	—
✓ Connecting to host labmia01.ais.us	00:00:38
✓ Restoring from Target Primary Repository	—
✓ Checking if vPower NFS datastore is mounted on host	00:00:40
✓ Locking backup files	—
✓ Publishing backup files	00:00:05
✓ Updating VM configuration	00:00:03
✓ Checking free disk space available to vPower NFS server	—
✓ Registering VM	00:00:10
✓ No VM tags to restore	00:00:01
✓ Creating VM snapshot	00:00:02
✓ Powering on VM	00:00:02

OK



Thank you!